

PT INSTRUÇÕES DE MONTAGEM

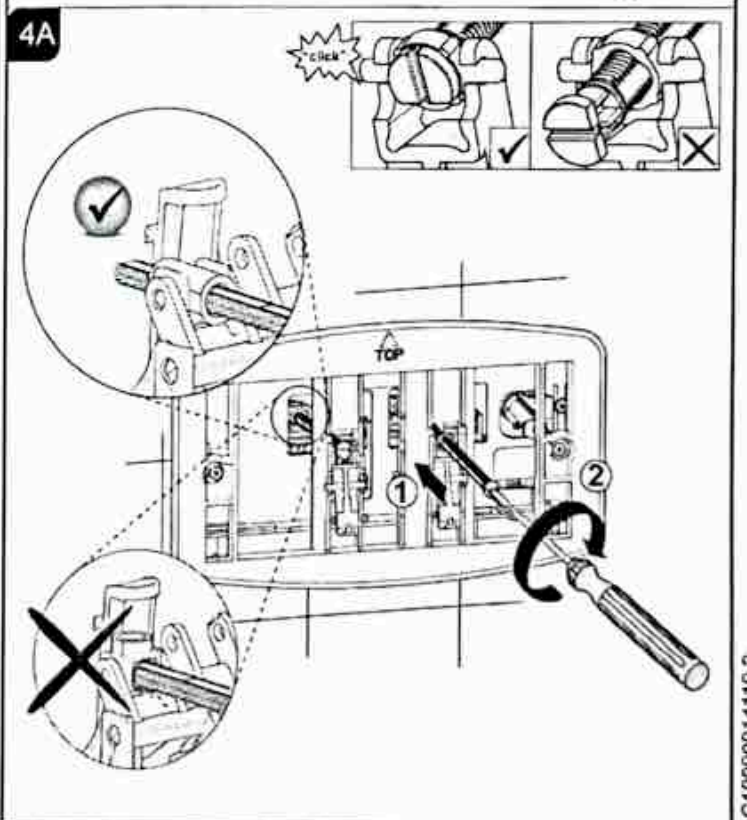
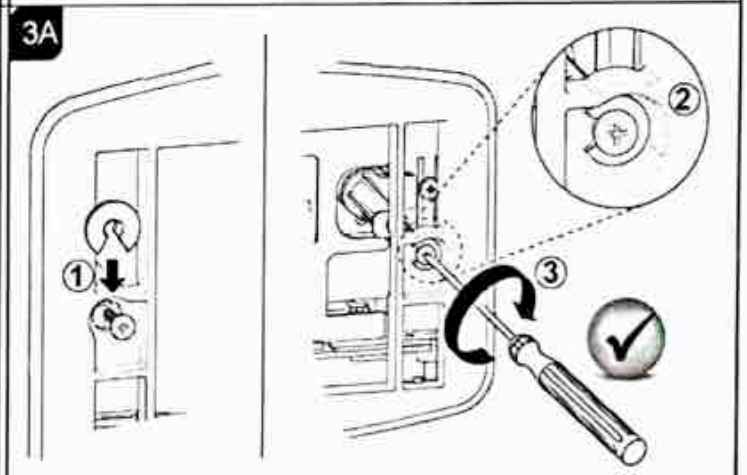
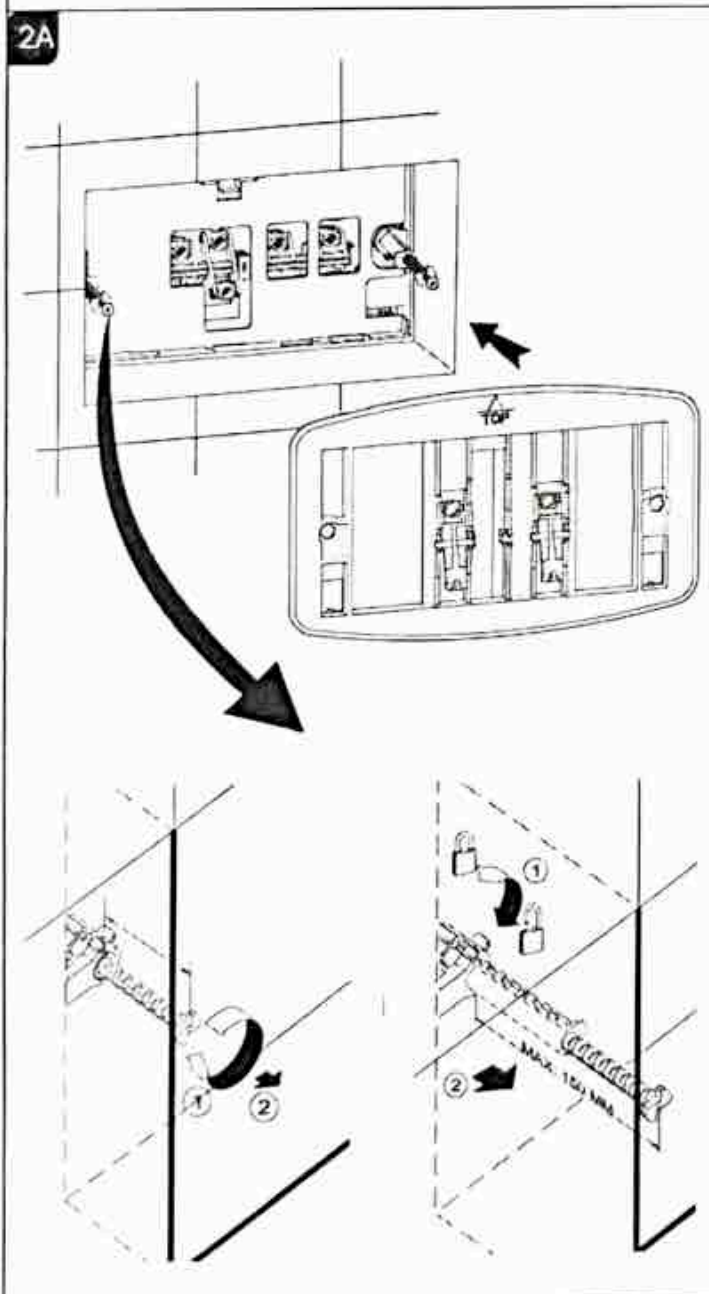
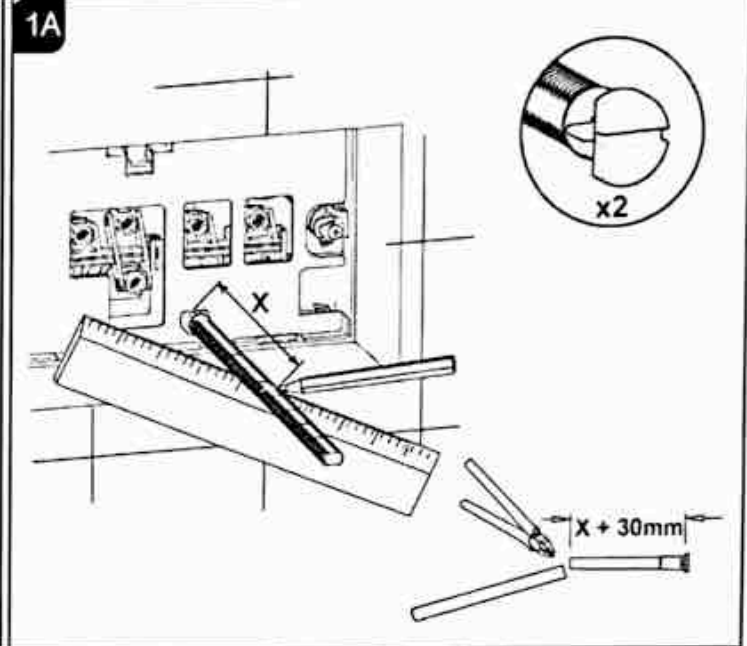
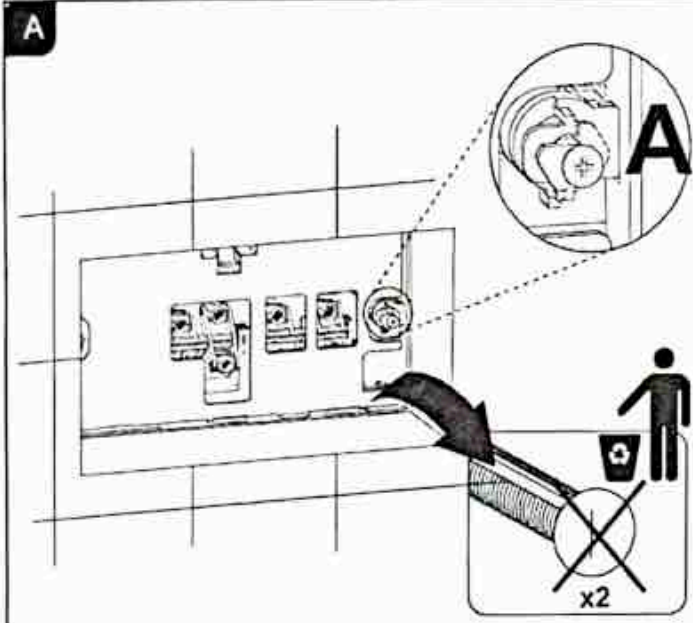
IT ISTRUZIONE DI MONTAGGIO

GB ASSEMBLY INSTRUCTIONS

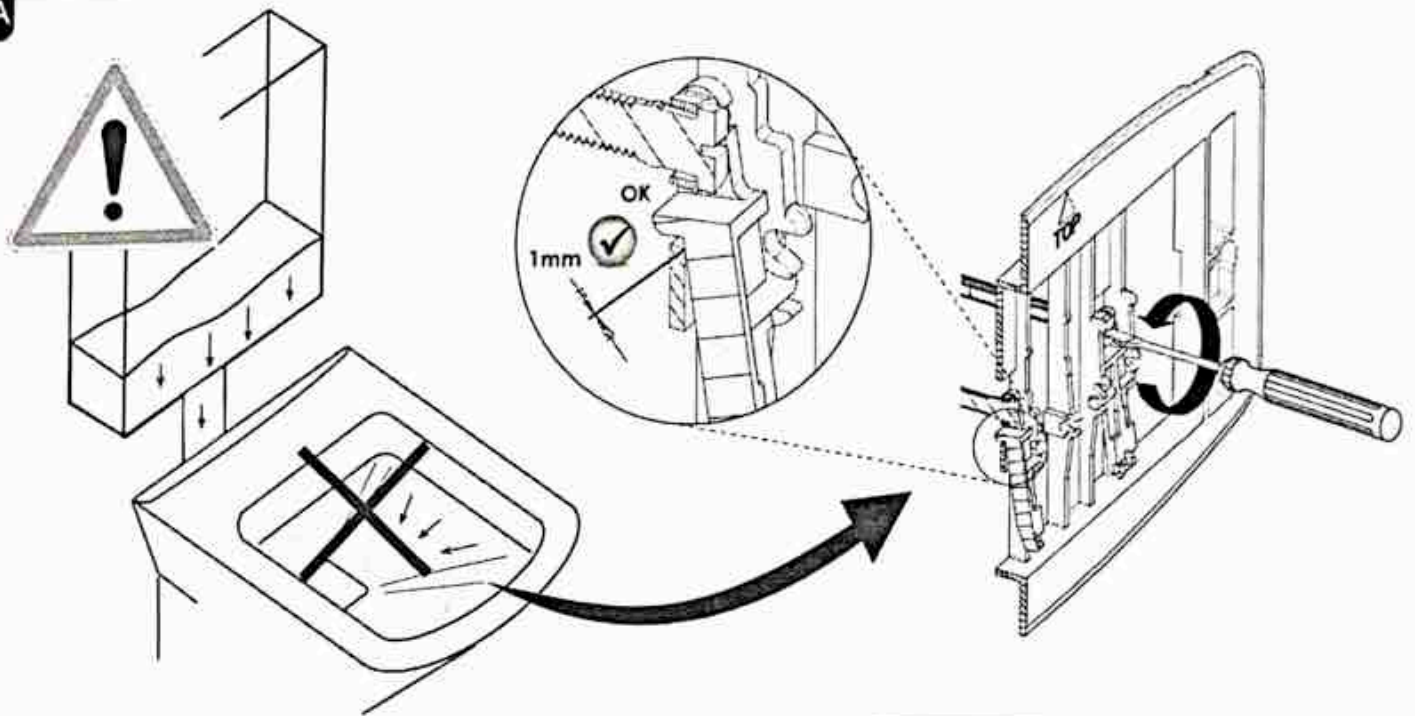
DE EINBAU INSTRUKTIONEN

FR NOTICE DE MONTAGE

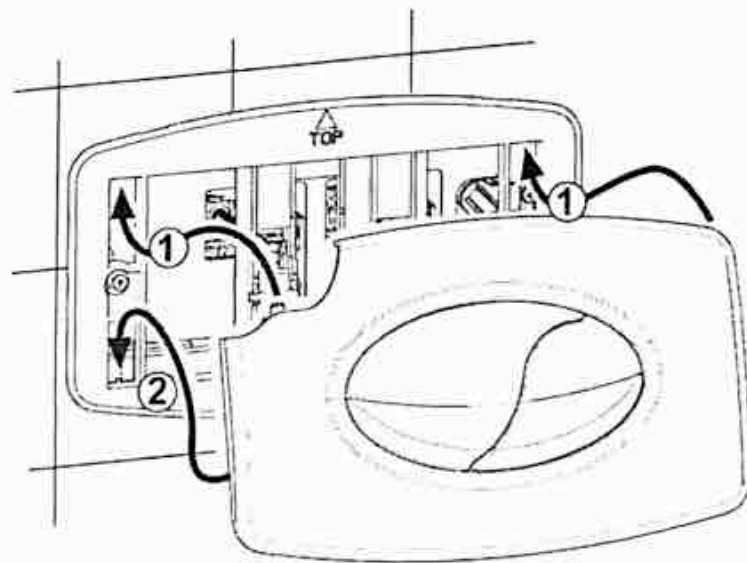
NL MONTAGE INSTRUCTIES



5A



6A



PT

A superfície das placas cromadas e pintadas não tem a mesma resistência das placas de aço inox. Portanto devem ser limpas unicamente com um pano húmido. Não aceitamos reclamações derivadas de um tratamento inadequado com ácidos, produtos químicos ou abrasivos.

IT

La superficie delle placche cromate e verniciate non ha la resistenza di quelle metal inox. Pertanto deve essere pulita unicamente con straccio umido. Non possiamo dunque accettare reclami per danni derivati da un trattamento inadeguato con acidi, prodotti chimici o abrasivi.

GB

The surface of the chromium-plate and painted control plates does not have the same resistance of the ones in stainless steel. It must be cleaned only by means of a damp cloth. Claims for damages due to inappropriate cleaning with the use of acid, chemicals or abrasive compounds will not be accepted.

DE

Die Oberfläche der verchromten und lackierten Betätigungsplatten hat nicht denselben Widerstand der Edelstahlplatten. Sie soll nur mit einem feuchten Lappen geputzt werden.

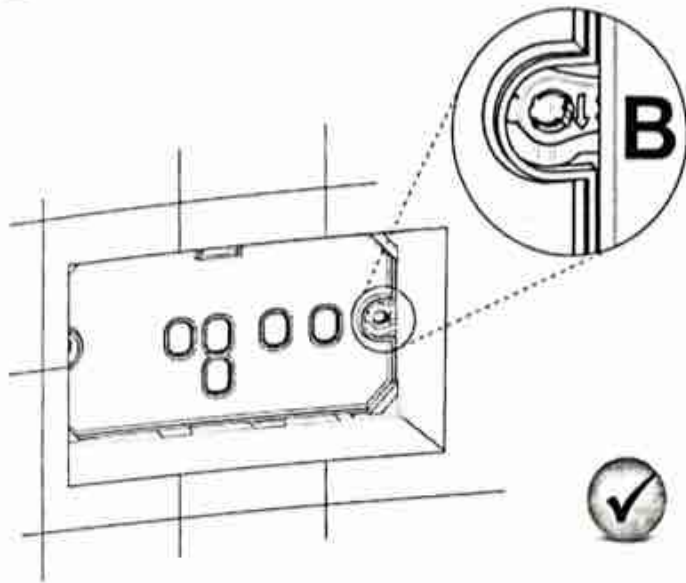
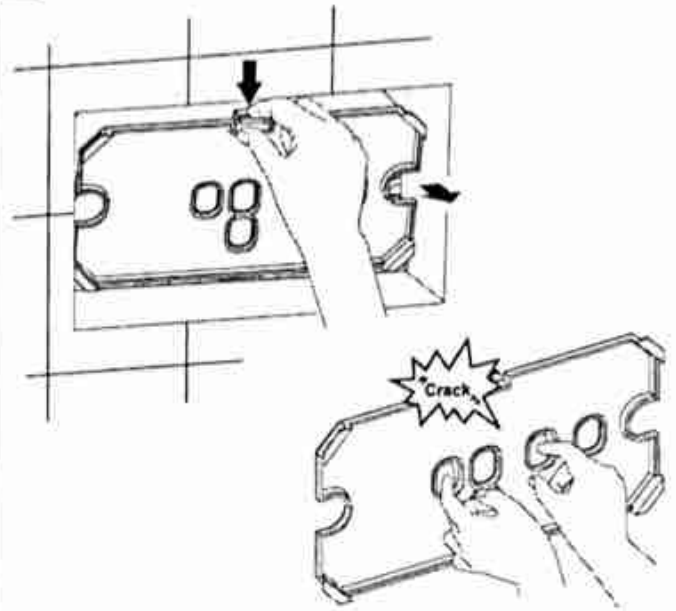
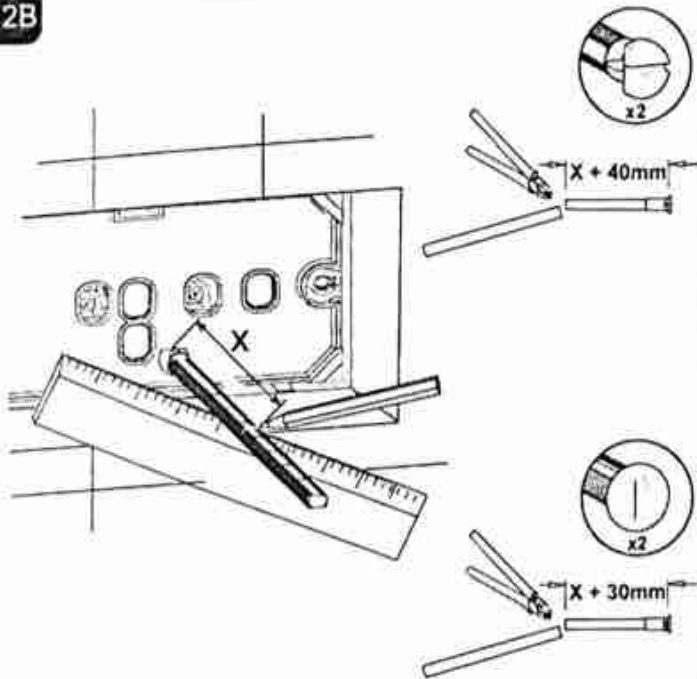
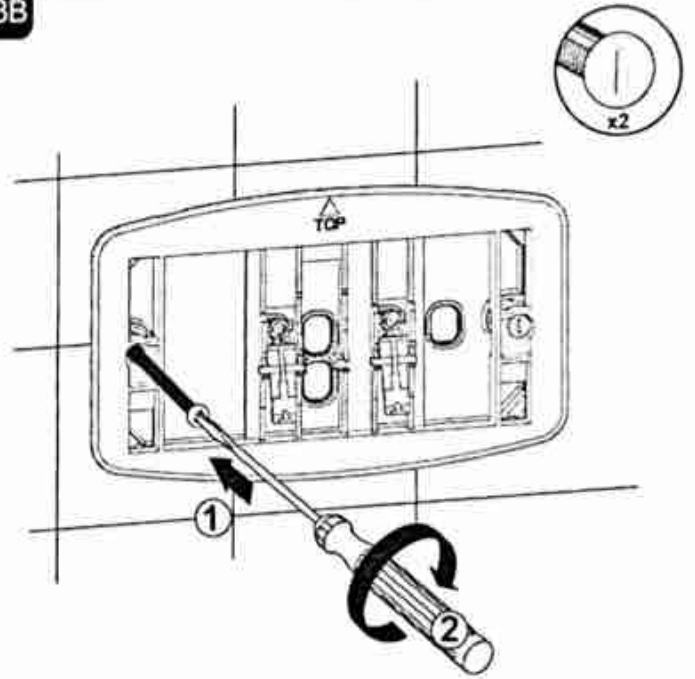
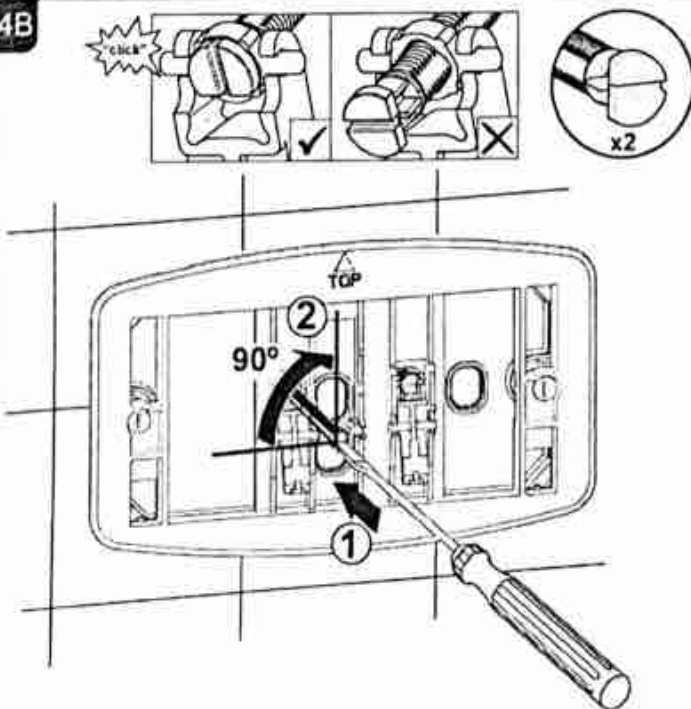
Wir können also keine Beanstandung wegen Schäden aus einer unrichtigen Behandlung mit Säuren, Chemikalien oder Schleifmitteln annehmen.

FR

La surface des plaques de commande chromées et peintes n'a pas la même résistance de celles en acier inoxydable. Elle doit être nettoyée à l'aide d'un chiffon humide. Aucune réclamation pour dommages dus à un mauvais traitement avec des acides, des produits chimiques ou abrasifs ne sera acceptée.

NL

Alleen schoonmaken met een droge of vochtige doek. Alle reclamaties die door gebruik van schoonmaakmiddelen ontstaan, zullen niet worden geaccepteerd.

B**1B****2B****3B****4B****5B**